

Everwood

GATED LIVING IN SILVER VALLEY

PLAN B

3 BEDROOM, 2.5 BATH

1,710-1,719 SQ. FT. INDOOR

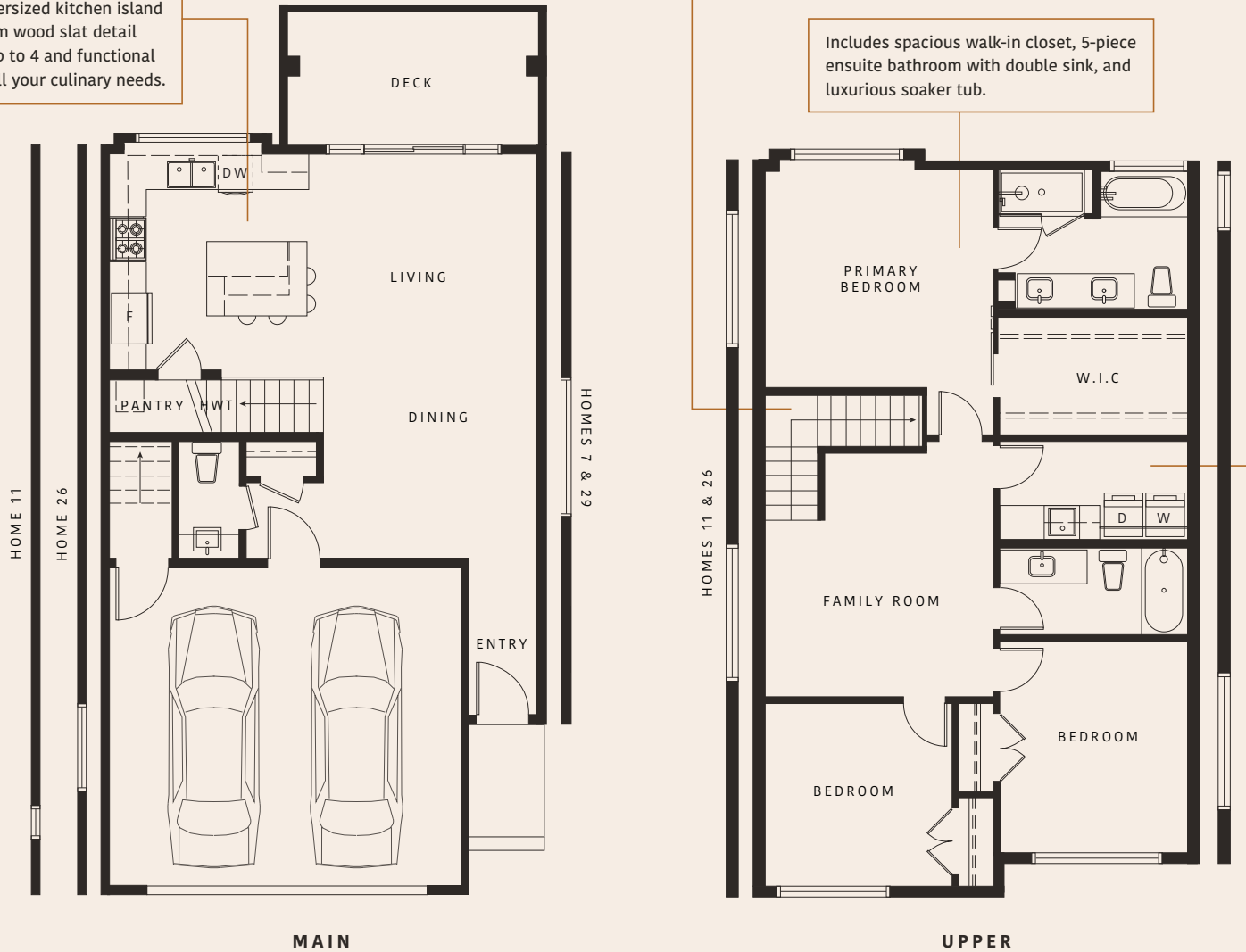
463-775 SQ. FT. OUTDOOR

Kitchen includes two-toned cabinets with a 24-inch deep second tier for added storage. Oversized kitchen island with stylish custom wood slat detail with seating for up to 4 and functional pantry space for all your culinary needs.

Stairwell features custom slatted wood wall detail with beautiful pendant lighting.

Includes spacious walk-in closet, 5-piece ensuite bathroom with double sink, and luxurious soaker tub.

Laundry room is on the same level as bedrooms with side-by-side washer and dryer, sink and cabinetry above for storage.



WOODLOCK DEVELOPMENTS

In our continuing effort to improve and maintain the high standard of the Everwood development, the developer reserves the right to modify or change plans, specifications, features, and prices without notice. Materials may be substituted with equivalent or better at the developer's sole discretion. All dimensions and sizes are approximate and are based on preliminary survey measurements. As reverse plans occur throughout the development, please see architectural plans. Renderings are an artist's conception and are intended as a general reference only. This is currently not an offering for sale. Any such offering can only be made with a disclosure statement. E. & O.E. Sales and Marketing provided by Breakside Real Estate Group. www.breakside.ca. 604.954.0691.